

- **Safety:** The panel is made of high-strength cast steel in one piece, with strong load capacity and impact resistance, and the safety performance is the best in the industry.
- **Durability:** The service life of the cast steel panel is more than 10 years, and the total mileage is more than 3 million kilometers. The whole plate is cast in one piece, the support legs are precision cast steel, and the connecting shaft is forged, which has better durability and wear resistance.



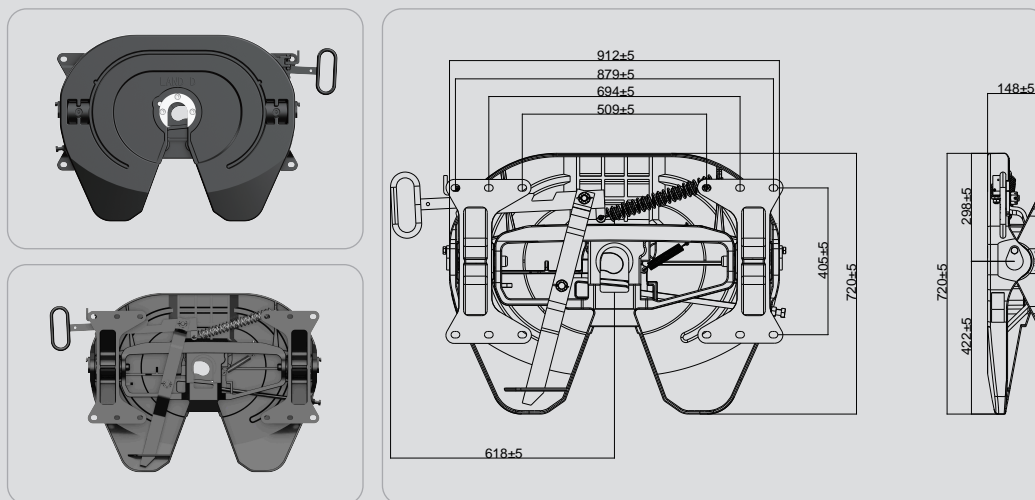
- **Maintenance:** The main connecting parts are precision forged and military quality. The external bearing pin structure has a longer service life and is easier and more convenient to repair and maintain.
- **Economical:** The cast steel fifth wheel has excellent wear resistance and can significantly extend the maintenance cycle. It is ultra-light and more wear-resistant, saving a lot of maintenance costs.
- **Due to its product characteristics,** it is particularly suitable for cold chain transportation and hazardous chemicals transportation.

Approved / Certified By:
Australia-AS/NZS4968.2 and Europe Union - E32°55R02/0263
TS : 16949

Class of coupling : G50-3
Characteristic Value : D-152KN; U-25T
Restriction Contents : Unsuitable for positive steering;
Made by : Shijiazhuang Land Auto Component Ltd.

Shijiazhuang Land Auto Component Ltd.

Address : Luquan District, Hebei Province, China
Website : www.landfifthwheel.com
E-mail : info@land-d.cn



Technical parameters

01 / (Impose load):25T

02 / (D-value):152KN

03 / (net weight):125kg

04 / (tilt angle):15°

05 / (kingpin size):50mm

Type 规格	H (mm) 高度	D-Value (KN) 牵引力	Impose load (KG) 垂直载荷	Weight (KG) 重量	Tilt Angle (α) 摆角	Total weight of Outfit (KG) 最大整车质量	King Pin Size 牵引销规格
LD-37Q135	135	152	25000	125	15°	65000	50mm
LD-37Q150	150	152	25000	126	15°	65000	50mm
LD-37Q180	180	152	25000	127	15°	65000	50mm
LD-37Q195	195	152	25000	128	15°	65000	50mm
LD-37Q250	250	152	25000	131	15°	65000	50mm

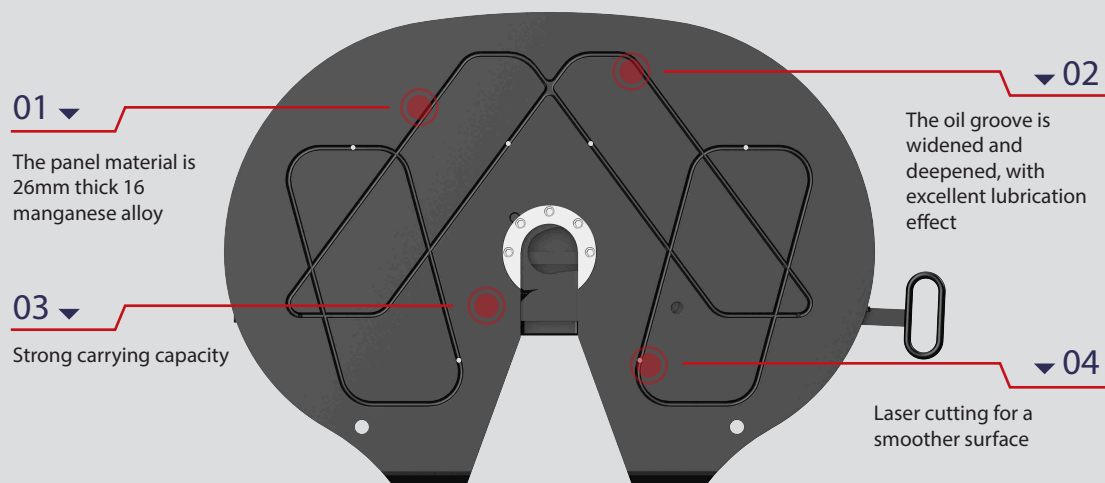
Approved / Certified By:
Australia-AS/NZS4968.2 and Europe Union - E32°55R02/0263
TS : 16949

Class of coupling : G50-3
Characteristic Value : D-152KN; U-25T
Restriction Contents : Unsuitable for positive steering;
Made by : Shijiazhuang Land Auto Component Ltd.

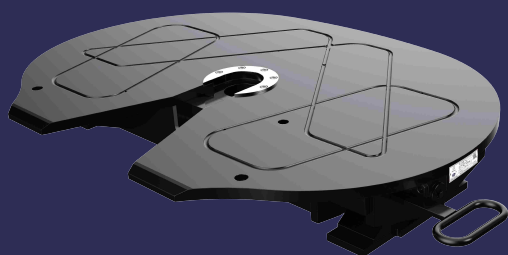
Shijiazhuang Land Auto Component Ltd.

Address : Luquan District, Hebei Province, China
Website : www.landfifthwheel.com
E-mail : info@land-d.cn

Extra heavy duty fifth wheel LD-5052



- This fifth wheel is specially designed for heavy loads, with a vertical load of 75 tons and can carry a vehicle weight of up to 300 tons.
- The forged hook wedge is specially widened and thickened to ensure safety and stability even when driving with heavy loads.
- The 26 mm thick panel cut by laser ensures high reliability under extreme load conditions



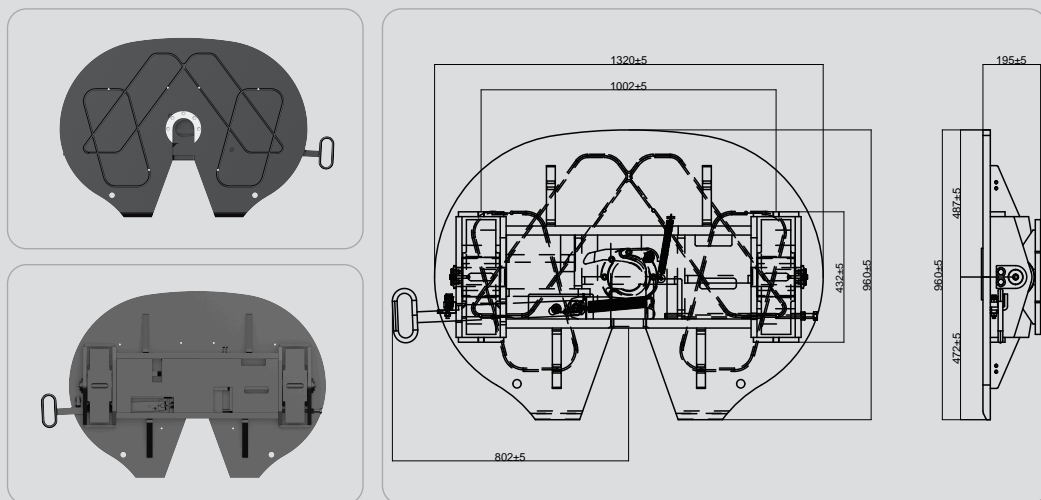
- LD-5052 fifth wheel is mainly suitable for transporting large items, overload, mining and various complex road conditions.
- It has a reliable self-locking mechanism, which is safer to use. It ensures stability and safety during transportation and reduces the risk of accidents.
- It has a very long service life and can be used for a long time even in harsh environmental conditions. High-quality materials give it a solid structure, increasing its resilience and durability

Approved / Certified By:
Australia-AS/NZS4968.2 and Europe Union - E32°55R02/0263
TS:16949

Class of coupling : G50-3
Characteristic Value : D-152KN; U-25T
Restriction Contents : Unsuitable for positive steering;
Made by : Shijiazhuang Land Auto Component Ltd.

Shijiazhuang Land Auto Component Ltd.

Address : Luquan District, Hebei Province, China
Website : www.landfifthwheel.com
E-mail : info@land-d.cn



Technical parameters

技术参数

01 / (Impose load): 75T	02 / (D-value) : 400KN	03 / (tilt angle): 12°
04 / (kingpin size): 90mm	05 / (Total weight of Outfit) : 300T	06 / (net weight): 425kg

Type	H (mm)	D-Value (KN)	Impose load (KG)	Weight (KG)	Tilt Angle (α)	King Pin Size
规格	高度	牵引力	垂直载荷	重量	摆角	牵引销规格
LD-5052	195	400	75000	425	12°	90mm

Approved / Certified By:
Australia-AS/NZS4968.2 and Europe Union - E32°55R02/0263
TS : 16949

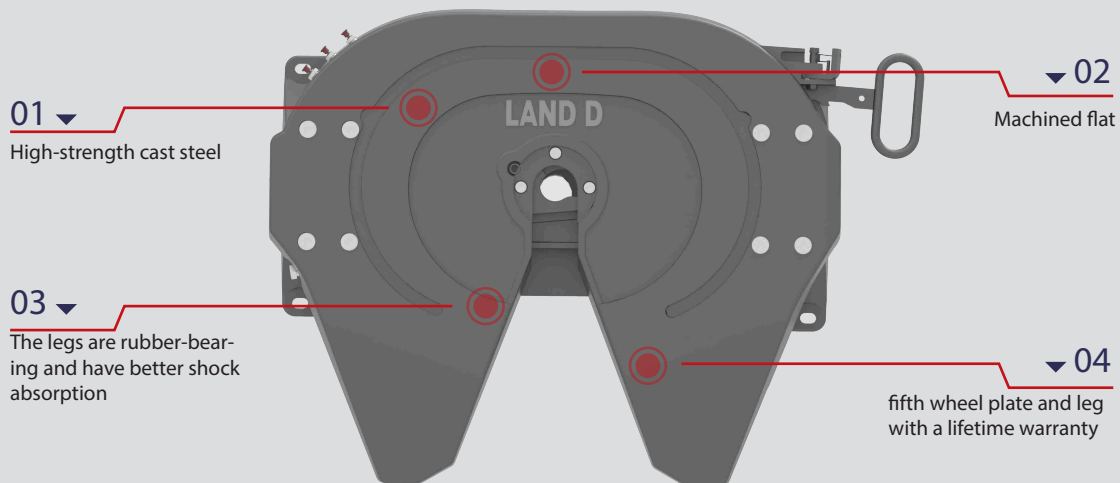
Class of coupling : G50-3
Characteristic Value : D-152KN; U-25T
Restriction Contents : Unsuitable for positive steering;
Made by : Shijiazhuang Land Auto Component Ltd.

Shijiazhuang Land Auto Component Ltd.

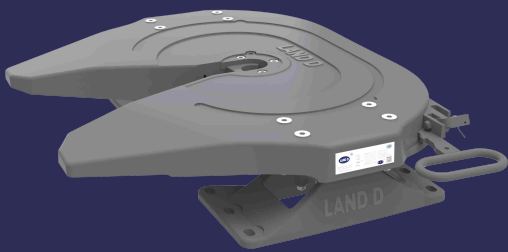
Address : Luquan District, Hebei Province, China
Website : www.landfifthwheel.com
E-mail : info@land-d.cn

High quality cast steel fifth wheel

LD-37C



- The LD-37C is one of our flagship products. The panel and legs are made of cast steel with better tensile strength, and the hook and wedge are precision forged.
- The LD-37C has reliable self-locking performance and safety performance, providing longer-term protection for your trailer and a safer experience for the driver.
- The LD-37C has excellent load-bearing capacity, ensuring that the towing seat will not be damaged or deformed even under harsh road conditions.
- The machined surface increases the contact area and can be easily moved, allowing the highest precision control of hooking and unhooking the trailer.



- LD-37C is widely used by FAW in vehicles exported to Africa and North America, and is well received by customers for its stable performance.

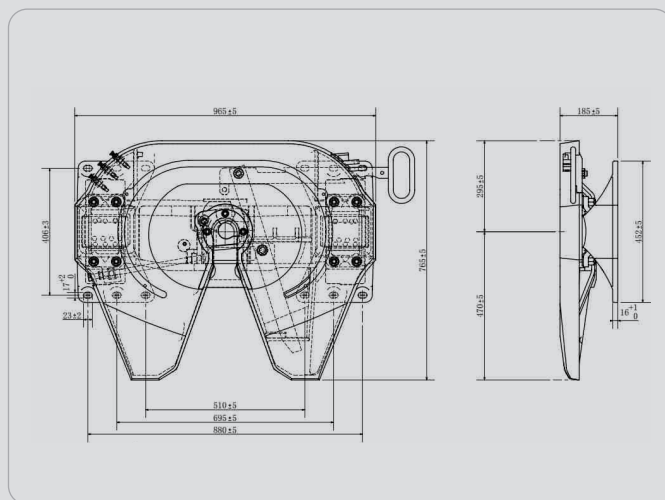
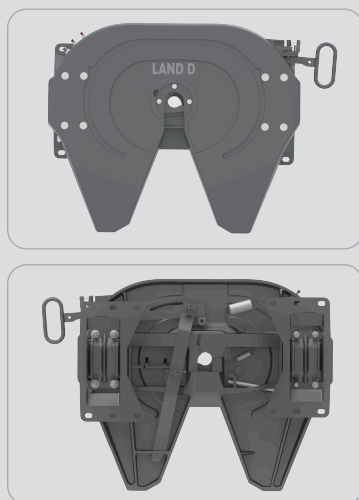
- With the self-locking function, the fifth wheel will be firmly fixed in place, ensuring the safety of the trailer during transportation.
- The legs of LD-37C are equipped with rubber for better shock absorption. This innovation effectively reduces the bumps and vibrations during transportation, bringing drivers a smoother and more comfortable driving experience.
- The fifth wheel we produce has excellent quality and absolute reliability. We can provide a lifetime warranty on the legs and plates to ensure that you get a better experience throughout the life cycle of the product.

Approved/Certified By:
Australia -AS/NZS4968.2 and Europe Union - E32°55R02/0263
TS:16949

Class of Coupling : G50-3;
Characteristic Value: D-152KN; U-25T
Restriction Contents: Unsuitable for positive steering;
Made by: Shijiazhuang Land Auto Component Ltd.

Shijiazhuang Land Auto Component Ltd.

Address : Luquan District, Hebei Province, China
E-mail : info@land-d.cn
Website : www.landfifthwheel.com



Technical parameters

技术参数

01 / Impose load : 25T

02 / D-value : 152KN

03 / Net Weight : 175kg

04 / Tilt Angle : 15°

05 / Kingpin Size : 50mm

Type	H (mm)	D-Value (KN)	Impose load (KG)	Weight (KG)	Tilt Angle (α)	Total weight of Outfit (KG)	King Pin Size
规格	高度	牵引力	垂直载荷	重量	摆角	最大整车质量	牵引销规格
LD-37C150	150	152	25000	150	15°	65000	50mm
LD-37C170	170	152	25000	155	15°	65000	50mm
LD-37C185	185	152	25000	160	15°	65000	50mm
LD-37C250	250	152	25000	185	15°	65000	50mm
LD-37C300	300	152	25000	180	15°	65000	50mm

Approved/Certified By:
Australia -AS/NZS4968.2 and Europe Union - E32°55R02/0263
TS:16949

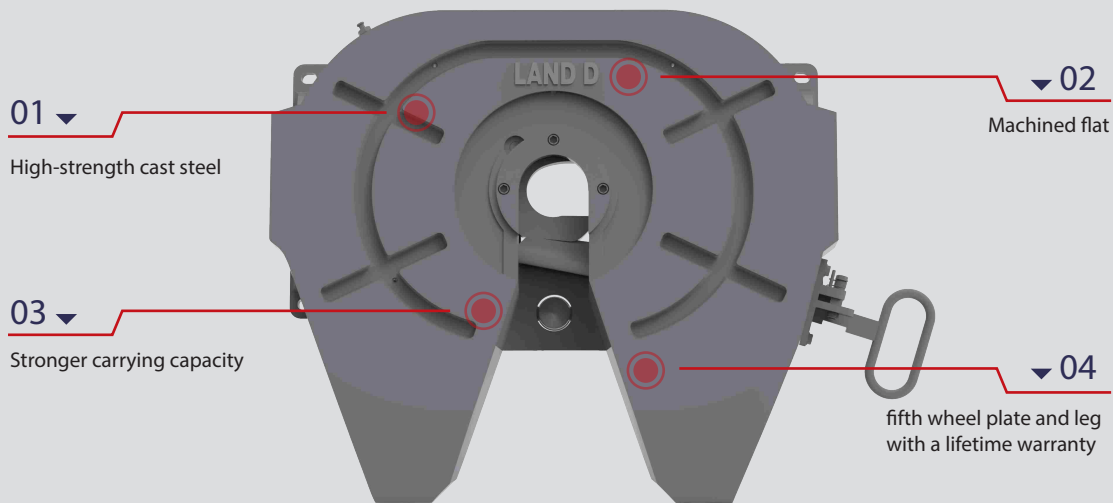
Class of Coupling : G50-3;
Characteristic Value: D-152KN; U-25T
Restriction Contents: Unsuitable for positive steering;
Made by: Shijiazhuang Land Auto Component Ltd.

Shijiazhuang Land Auto Component Ltd.

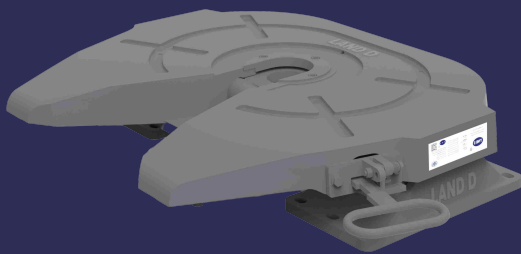
Address : Luquan District, Hebei Province, China
E-mail : info@land-d.cn
Website : www.landfifthwheel.com

High quality cast steel fifth wheel

LD-38C



- High-strength cast steel panel has stronger load-bearing capacity.
- LD-38C adopts high-strength cast steel panel and thickened legs to improve the stability and load-bearing capacity of the product. The lock hook is made of precision forging, with stronger load-bearing capacity, and is more suitable for heavy machinery and equipment to transport goods.
- LD-38C is an upgraded version of LD-37C fifth wheel, designed to solve the transportation problems of heavy and large goods for customers.



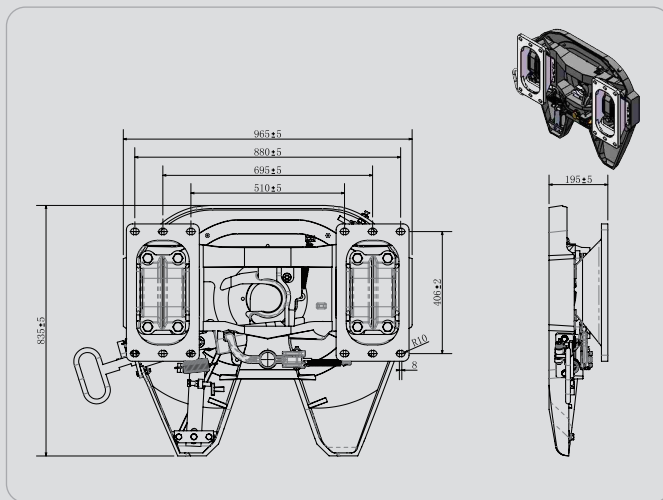
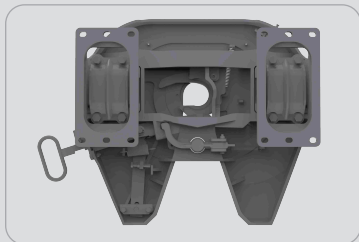
- The machined panel reduces uneven wear on the exterior and allows for easy movement. It hooks and unhooks the trailer with ultra-high precision. It makes the trailer drive smoother.
- High-quality materials and one-piece casting process make it stronger and more stable, ensuring its durability.
- The LD-38C uses a plunger design to ensure a safer connection between the trailer and the fifth wheel. The reliable self-locking mechanism ensures stability during transportation and reduces the risk of accidents.
- Lifetime warranty on the plate and legs.

Approved/Certified By:
Australia -AS/NZS4968.2 and Europe Union - E32°55R02/0263
TS:16949

Class of Coupling : G50-3;
Characteristic Value: D-152KN; U-25T
Restriction Contents: Unsuitable for positive steering;
Made by: Shijiazhuang Land Auto Component Ltd.

Shijiazhuang Land Auto Component Ltd.

Address : Luquan District, Hebei Province, China
E-mail : info@land-d.cn
Website : www.landfifthwheel.com



Technical parameters

技术参数

01 / Impose load : 36T

02 / D-value : 260KN

03 / Portrait Tilt Angle : 15°

04 / Kingpin Size : 90mm

05 / Black paint on the surface

06 / Pull rod operating force $\leq 500N$

07 / Castings Execution Standard: ASTM A27 70-40

Type	H (mm)	D-Value (KN)	Impose load (KG)	Weight (KG)	Tilt Angle (α)	King Pin Size
规格	高度	牵引力	垂直载荷	重量	摆角	牵引销规格
LD38C-1	195	260	36000	228	15°	90mm
LD38C-1-2"	195	170	28000	227	15°	50mm

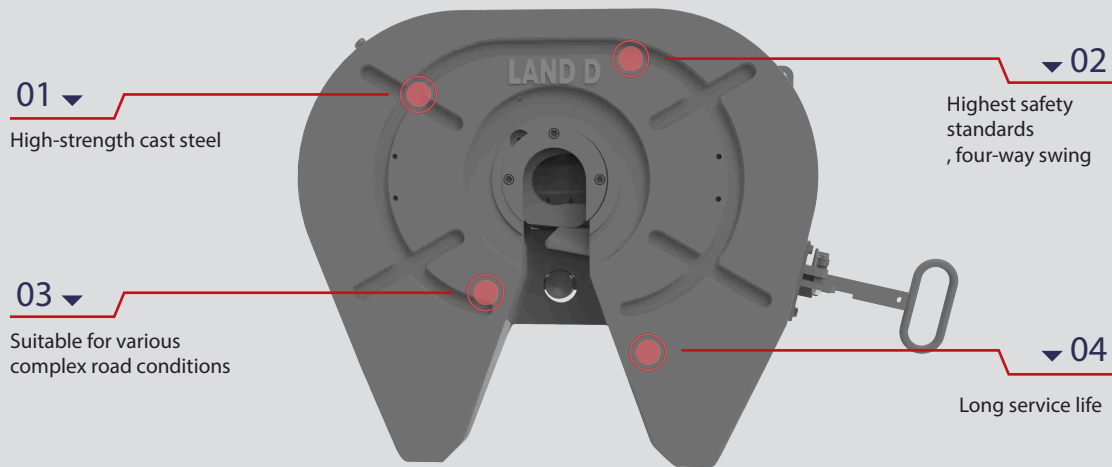
Approved/Certified By:
Australia - AS/NZS4968.2 and Europe Union - E32°55R02/0263
TS:16949

Class of Coupling : G50-3;
Characteristic Value: D-152KN; U-25T
Restriction Contents: Unsuitable for positive steering;
Made by: Shijiazhuang Land Auto Component Ltd.

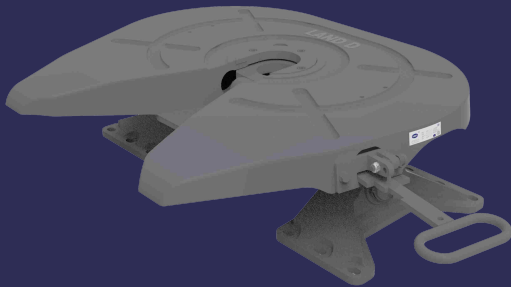
Shijiazhuang Land Auto Component Ltd.

Address : Luquan District, Hebei Province, China
E-mail : info@land-d.cn
Website : www.landfifthwheel.com

Four-way swing cast steel fifth wheel LD-3800



- The legs, balancer and plate of the LD-3800 fifth wheel are made of thickened cast steel, and the hook is precision forged. It has excellent load-bearing capacity and can easily handle and tow large tonnage cargo under complex road conditions.



- The ability of the LD-3800 towing bracket to adapt to complex road conditions ensures the safety of the trailer during transportation, and the four-way swing design ensures stability during driving. It can improve overall efficiency and reduce fuel consumption.
- The LD-3800 has a solid structure and high-quality materials, which can ensure that it has an ultra-long service life and can withstand various harsh environmental conditions.

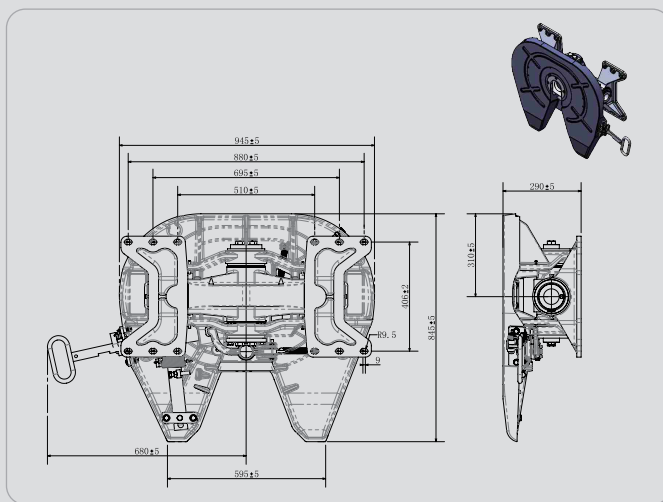
- One of the most notable features of LD-3800 is its four-way swing capability. This unique design allows the fifth wheel to swing freely in any direction, making it suitable for driving on rugged mountain roads, jungle areas and mining areas, effectively solving the problem of vehicles being easily damaged when driving on bumpy roads.
- On roads and highways with better road conditions, the driver can switch the fifth wheel to a four-way swing mode to ensure high speed, safety and stability in cargo transportation.
- It is used in military vehicles by major domestic OEMs such as Shacman, FAW, CITIC Electromechanical, Shanxi Aerospace Tsinghua Equipment, and XCMG.
- It is recommended by many OEMs for its stable performance and high-quality service.

Approved/Certified By:
Australia -AS/NZS4968.2 and Europe Union - E32°55R02/0263
TS:16949

Class of Coupling : G50-3;
Characteristic Value: D-152KN; U-25T
Restriction Contents: Unsuitable for positive steering;
Made by: Shijiazhuang Land Auto Component Ltd.

Shijiazhuang Land Auto Component Ltd.

Address : Luquan District, Hebei Province, China
E-mail : info@land-d.cn
Website : www.landfifthwheel.com



技术参数

10 / Surface sprayed with black anti-rust paint

Port-specific cast steel fifth wheel LD-3510



01 ▼

Cast top plate, machined flat, stronger load-bearing surface.

▼ 02

Butterfly-shaped lock hook improves the safety and durability of the lock hook kingpin

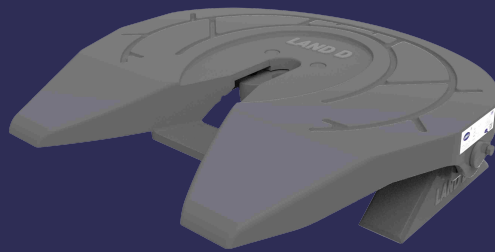
03 ▼

Release handle for easy operation, labor saving and improved safety. Cylinder automatic switch lock system, can be operated in the cab.

▼ 04

When connected to the fifth wheel, the sensor provides optimal safety

► The LD-3510 plate and legs are made of cast steel with better tensile strength, which has excellent strength and durability. It can ensure the safe transportation of various large containers and other heavy equipment. This product has been used by Shacman and Sinotruk for more than ten years, and has won unanimous praise from customers for its convenience and speed.



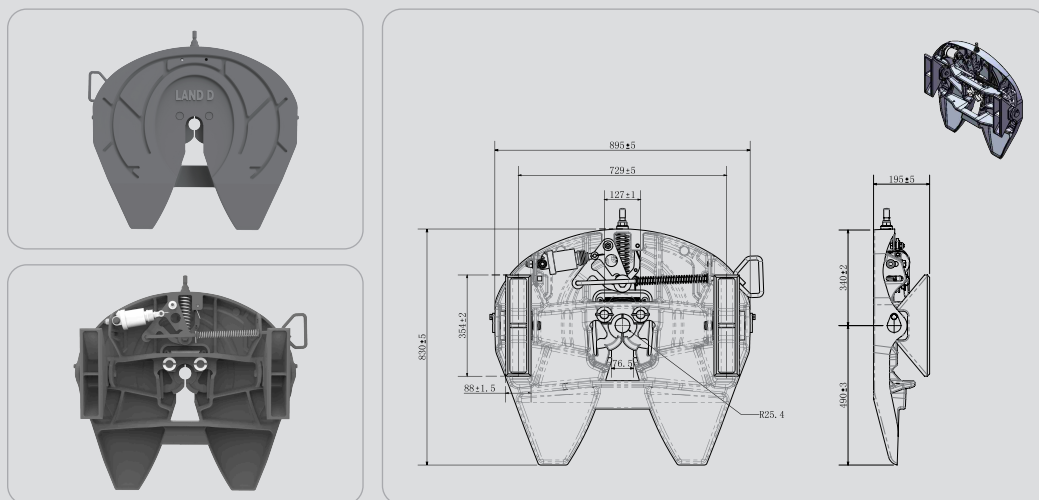
- A significant advantage of this product is the automatic unlocking mechanism, which is mainly suitable for container transport vehicles in ports. The driver can easily separate the vehicle and the container by pressing buttons in the cab without manual operation.
- The simple design of the LD-3510 fifth wheel allows for easy replacement of worn or damaged parts, reducing downtime and maintenance costs.
- In addition, there are also sensor monitoring models. In the cab, you can see whether the locking status of the fifth wheel is in place, providing drivers with a safer driving experience.
- Previously, this product was widely used by Shacman.

Approved/Certified By:
Australia -AS/NZS4968.2 and Europe Union - E32°55R02/0263
TS:16949

Class of Coupling : G50-3;
Characteristic Value: D-152KN; U-25T
Restriction Contents: Unsuitable for positive steering;
Made by: Shijiazhuang Land Auto Component Ltd.

Shijiazhuang Land Auto Component Ltd.

Address : Luquan District, Hebei Province, China
E-mail : info@land-d.cn
Website : www.landfifthwheel.com



Technical parameters

技术参数

- 01 / Impose Load: 36T 02 / D-Value: 190KN 03 / Weight: 165Kg
04 / Tilt Angle: 30° 05 / Kingpin Size: 50mm

Impose load (T)	D-Value (KN)	Weight (KG)	H (mm)	Portrait Tilt Angle (α)	Lateral Tilt Angle (α)	Appearance Dimension	Color	King Pin Size
垂直载荷	牵引力	重量	高度	纵向摆角	横向摆角	外型尺寸	颜色	牵引销规格
36T	152	165	195/170	30°	0°	See Attachment	Black	50mm
45T	170	170	195/170	30°	0°	See Attachment	Black	90mm

Approved/Certified By:
Australia -AS/NZS4968.2 and Europe Union - E32°55R02/0263
TS:16949

Class of Coupling : G50-3;
Characteristic Value: D-152KN; U-25T
Restriction Contents: Unsuitable for positive steering;
Made by: Shijiazhuang Land Auto Component Ltd.

Shijiazhuang Land Auto Component Ltd.

Address : Luquan District, Hebei Province, China
E-mail : info@land-d.cn
Website : www.land-fifthwheel.com